

Operator name and signature: Rolf Ugilt *Rolf Ugilt*

Output:	5847 lm
Peak:	2214 cd
Lux@50cm:	8855 Lux
Power:	43,3 W
Power Factor / DF ϕ 1:	0,6
Standby power	0,55 W

Light efficacy:

135 Lumen/Watt

Light quality:

CRI: 81,1

Color temperature:

6026 K



According to regulation (EU) 2019/2015

Directionality:	Directional
Useful Lumen:	5741 lm
η TM - Efficacy	156 lm/W
Energy Class:	D

Product name:

NOVA 6K C+R 100%

Item number:

03.5443

Date and time:

29-04-2021 10:23:31

Description:

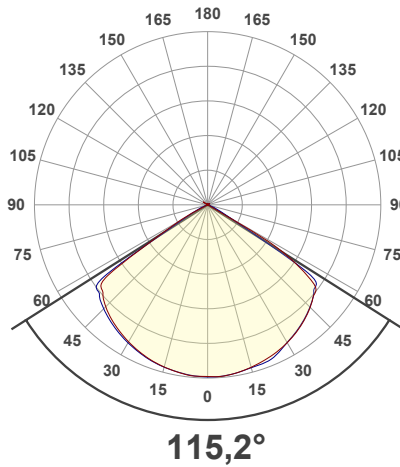
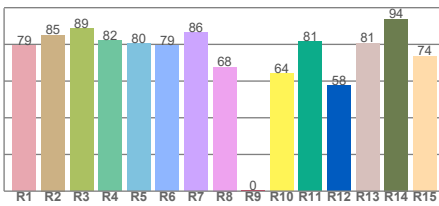
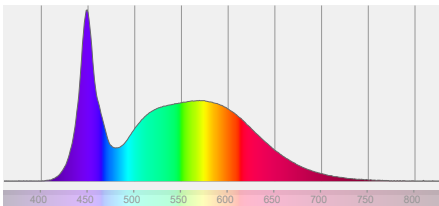
Standby Power [W]: 0,55

Sensor distance: 350cm

Warmup: 2% in 15 minutes

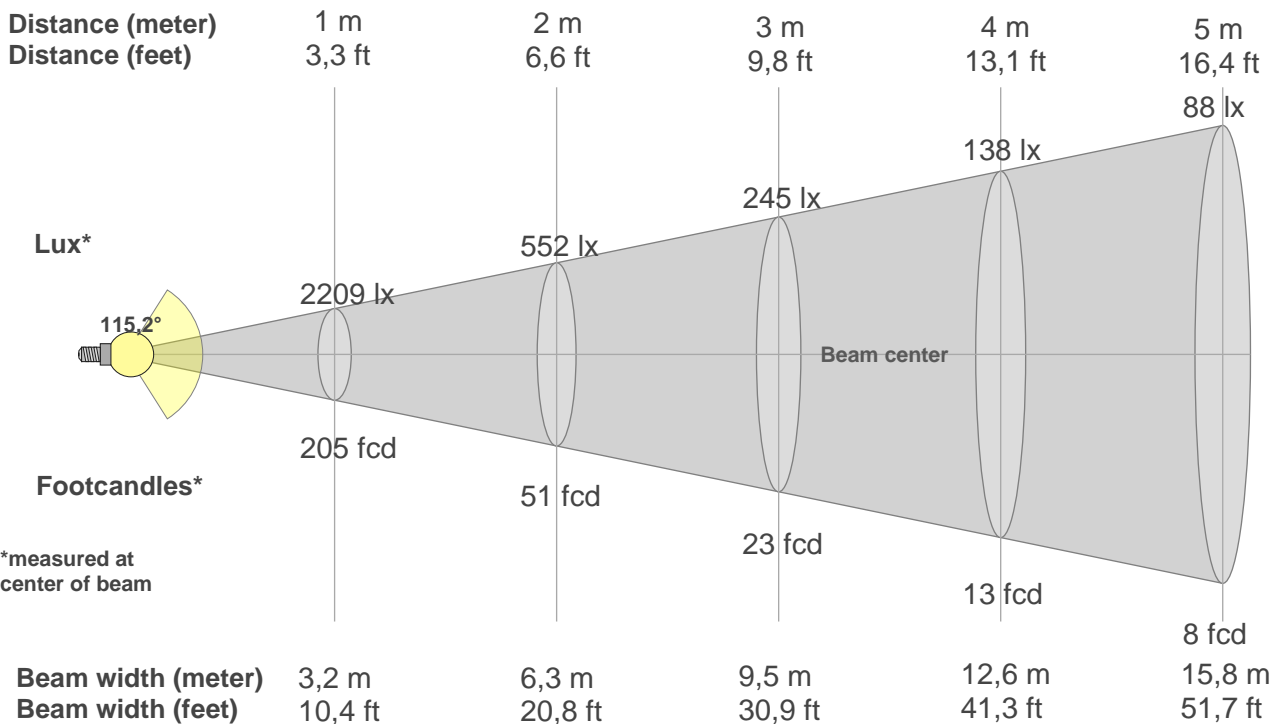
Power: Charger

Spectra



BEAM DETAILS

Beam distance: 94 meters



Beam intensities from 1-20m

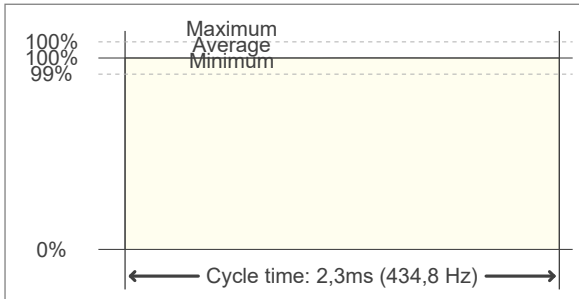
1m	2m	3m	4m	5m	6m	7m	8m	9m	10m	11m	12m	13m	14m	15m	16m	17m	18m	19m	20m
3,3ft	6,6ft	9,8ft	13,1ft	16,4ft	19,7ft	23ft	26,2ft	29,5ft	32,8ft	36,1ft	39,4ft	42,7ft	45,9ft	49,2ft	52,5ft	55,8ft	59,1ft	62,3ft	65,6ft
2209lx	552lx	245lx	138lx	88lx	61lx	45lx	35lx	27lx	22lx	18lx	15lx	13lx	11lx	10lx	9lx	8lx	7lx	6lx	6lx
205,2fc	51,3fcd	22,8fcd	12,8fcd	8,2fcd	5,7fcd	4,2fcd	3,2fcd	2,5fcd	2,1fcd	1,7fcd	1,4fcd	1,2fcd	1fcd	0,9fcd	0,8fcd	0,7fcd	0,6fcd	0,6fcd	0,5fcd

FLICKER DETAILS

Flicker curve (complete sampled flicker signal)



Flicker frame (frame of one flicker period)



Flicker frequency:	434,78 Hz
Flicker index:	0
Flicker percentage:	0,18 %
SVM: (Visual flicker)	0
Pst LM:	0,02
SDCM	3,3
Rated Color Temperature	6000 K
Duv	0,0009
CIE Coordinates (x, y)	0,321, 0,336
CIE Coordinates (u, v)	0,201, 0,315

WARMUP DETAILS according to EN 13032-1

